

EXAMPLE OF WIRING DIAGRAM

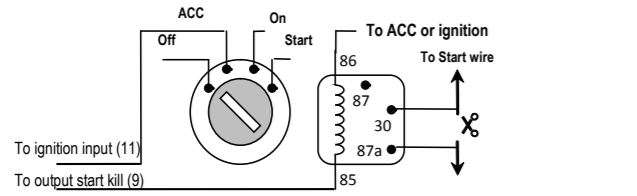


Fig.1 Wiring diagram for start kill relay

Note: Relay is delivered with alarm.

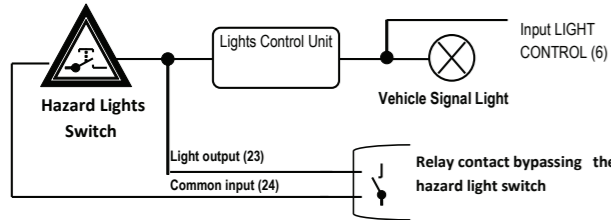


Fig. 2 Parking Lights output connected to the Hazard light switch

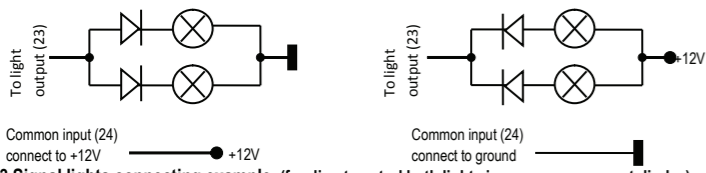


Fig.3 Signal lights connecting example (for direct control both lights is necessary connect diodes)

Example of wiring diagram for door locking system

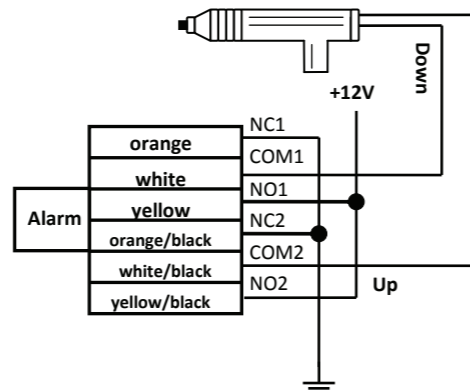


Fig.4 Original built-in central power lock & only a switch existed inside of front door. A motor and the control level were required.

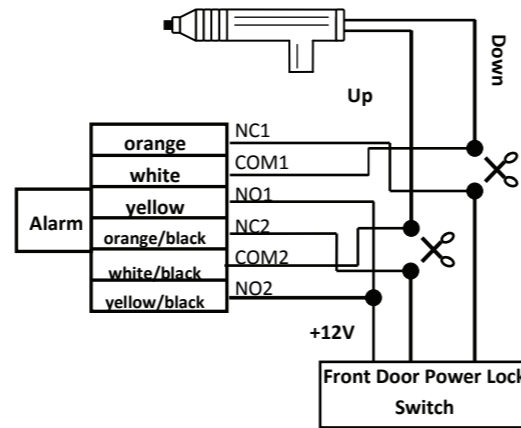
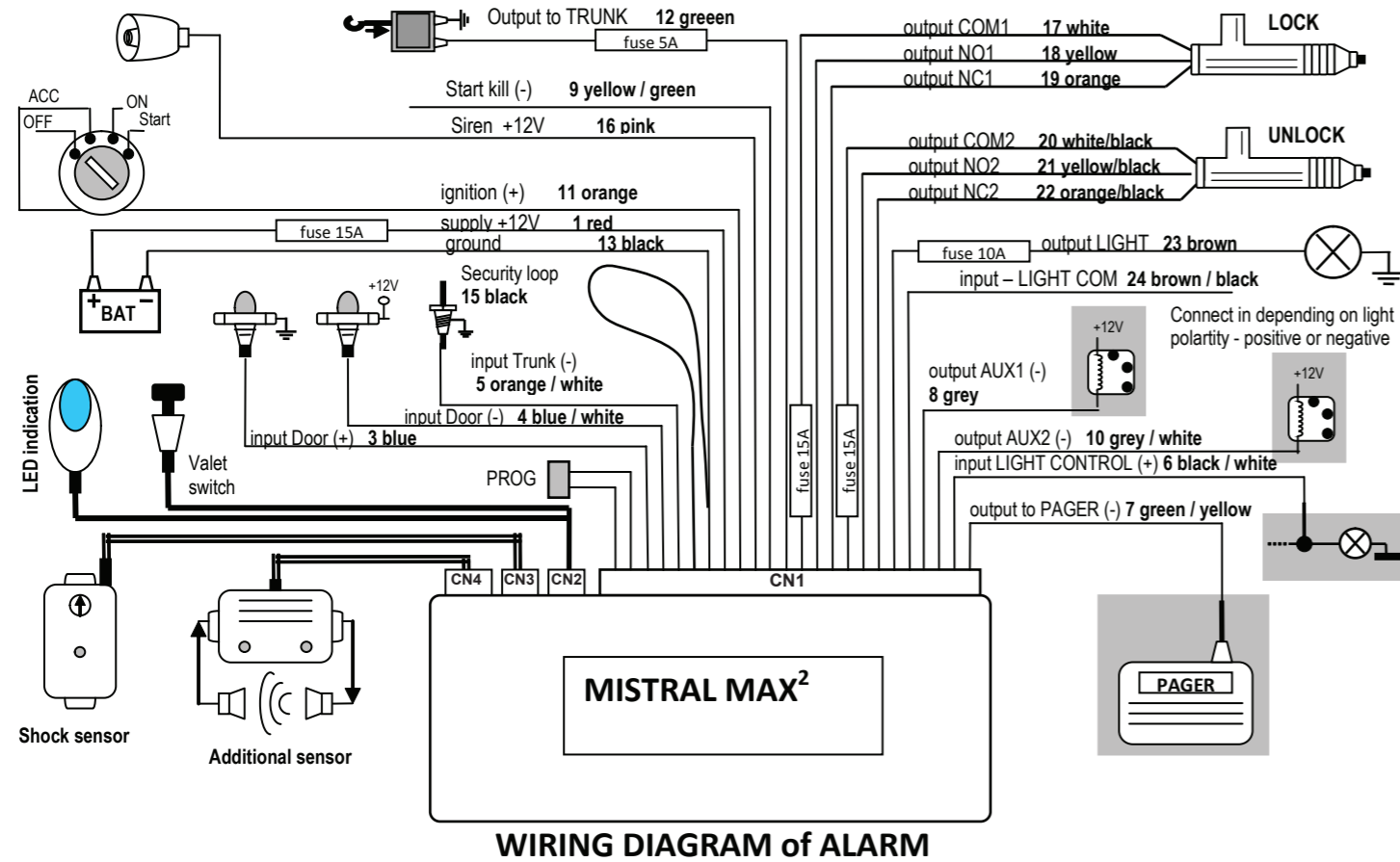


Fig.5 Original built-in central power lock & electric power lock switch were installed For example: CHRYSLER

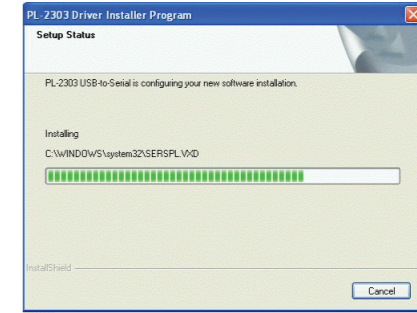


X. PROGRAMMING CAR ALARM VIA PC

The car alarm MISTRAL MAX² is possible to program via PC, too. To connect car alarm with PC and set parameters via PC, you need MISTRAL PROG programming cable and MISTRAL MAX² Alarm setup application, which must be installed before alarm connection. After installation of MISTRAL PROG cable and MAXprog application software is everything ready for programming.

Postup inštalácie ovládacieho súboru pre programovací kábel

- After unzipping archive file Cable_PL-2303_Drivers.zip, you must run the file PL2303_Prolific_WDMDriverInstaller_v1.6.1.exe, from unzipped folder.
- The program starts and displays the information page. It is possible to click **Next**.
- Files needed for a programming cable begin to install.
- After files successfully installed, installation complete page shows.



MISTRAL MAX² programming process

- Plug in connector of programming cable to the alarm.
- Alarm must be powered through the red (+) and black (ground).
- Connect the USB connector into a free USB port.
- Run MAXprog.exe. Program version can be updated, by adding alarm options. Watch distributor web site.
- Alarm login to the program will be automatically (green text of alarm firmware version will display in the row).



Application function description

- Save as...** - click on if you want actually configuration data from the display to write into file on the PC.
- Open** - click on if you want load configuration data from file into application. Loaded values are immediately showed on the display.
- Print** - actually configuration values from display is printed on the printer.
- Language** - it is possible to select application language.
- Exit** - application ended.
- Read** - click on if you want to receive configuration from car alarm into the PC. Received values are immediately showed on the display.
- Write** - click on if you want to send actually configuration from the display to car alarm.
- Default** - click on if you want to set car alarm to factory settings.
- Number of service code** - it is possible to set code for emergency disarming. For writing this emergency code into the car alarm, you need click on to **Write** button..

